



# MLKL Polyclonal Antibody

<b>Catalog No</b>	YP-Ab-14857
<b>Isotype</b>	IgG
<b>Reactivity</b>	Human;Rat;Mouse;
<b>Applications</b>	WB;IHC
<b>Gene Name</b>	MLKL
<b>Protein Name</b>	Mixed lineage kinase domain-like protein
<b>Immunogen</b>	Synthesized peptide derived from MLKL . at AA range: 40-120
<b>Specificity</b>	MLKL Polyclonal Antibody detects endogenous levels of MLKL protein.
<b>Formulation</b>	Liquid in PBS containing 50% glycerol, 0.5% BSA and 0.02% sodium azide.
<b>Source</b>	Polyclonal, Rabbit,IgG
<b>Purification</b>	The antibody was affinity-purified from rabbit antiserum by affinity-chromatography using epitope-specific immunogen.
<b>Dilution</b>	WB 1:500-2000;IHC-p 1:50-300
<b>Concentration</b>	1 mg/ml
<b>Purity</b>	≥90%
<b>Storage Stability</b>	-20°C/1 year
<b>Synonyms</b>	MLKL; Mixed lineage kinase domain-like protein
<b>Observed Band</b>	55kD
<b>Cell Pathway</b>	Cytoplasm . Cell membrane . Nucleus . Localizes to the cytoplasm and translocates to the plasma membrane on necroptosis induction (PubMed:24316671). Localizes to the nucleus in response to orthomyxoviruses infection (By similarity). .
<b>Tissue Specificity</b>	Chondrocyte,Leukocyte,Lymph node,
<b>Function</b>	domain:The protein kinase domain is predicted to be catalytically inactive.,similarity:Belongs to the protein kinase superfamily.,similarity:Contains 1 protein kinase domain.,
<b>Background</b>	This gene belongs to the protein kinase superfamily. The encoded protein contains a protein kinase-like domain; however, is thought to be inactive because it lacks several residues required for activity. This protein plays a critical role in tumor necrosis factor (TNF)-induced necroptosis, a programmed cell death process, via interaction with receptor-interacting protein 3 (RIP3), which is a key signaling molecule in necroptosis pathway. Inhibitor studies and knockdown of this gene inhibited TNF-induced necrosis. High levels of this protein and RIP3 are associated with inflammatory bowel disease in children. Alternatively spliced transcript variants have been described for this gene. [provided by RefSeq, Sep 2015],



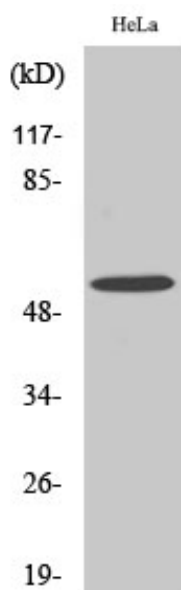
**matters needing attention**

Avoid repeated freezing and thawing!

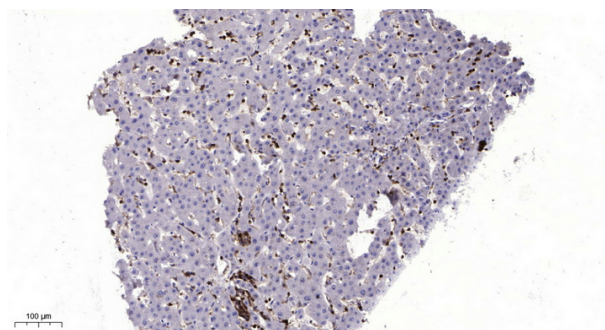
**Usage suggestions**

This product can be used in immunological reaction related experiments. For more information, please consult technical personnel.

## Products Images



Western Blot analysis of various cells using MLKL Polyclonal Antibody diluted at 1:500



Immunohistochemical analysis of paraffin-embedded human liver cancer. 1, Antibody was diluted at 1:200(4° overnight). 2, Tris-EDTA,pH9.0 was used for antigen retrieval. 3,Secondary antibody was diluted at 1:200(room temperature, 45min).